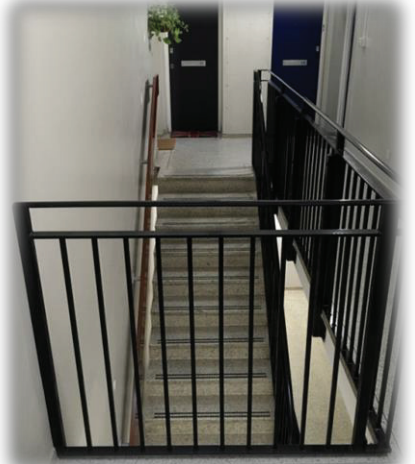


Case Study Black Rod Close

Oct 2015

Installation of steel railings

EA-RS



PROJECT SUMMARY

Where: Black Rod Close, Blk 31-41, Hayes, UB3
Customer: A2 Dominion

Application: To supply and install replacement the wooden railings on the stairwell for steel railings



BLACK ROD
CLOSE
31 - 41





**MERCHANT
SQUARE W2**
CITY OF WESTMINSTER

PROJECT DETAILS

Door Entry System & Access Control:

Front Communal Entrance Door - Installation of a Digital Sentinel 4

Video Door Entry Panel with a built in PROX proximity reader and Request to exit button for Exit doors to be secured with double Mag locks (Maglocks by others) and Fireman's Drop Key Switch. Each Flat 1-43 to be fitted with a Black & White Video Handset connected to the Door Entry System. Handset has external input for additional devices as strobe light, external sounder or any other devices required. Handset has timed privacy button to disable ring tone (8h default)

- Isolation card to isolate faulty handsets from system; faulty handsets will not cause problems to the whole system as ISO card will isolate it.
- PSU unit with backup battery and BST/GMT self correcting trades timer
- 135 EA-RS PROX Keyfobs 3 per flat and 6 spare
- An equipment box located on every second floor that will serve 6 handsets / 2 floors.

Bike Store - There is a entrance to the Bike Store - Prox IN - Exit Button and Break Glass for Exit - Locking by Others

Refuse Store- There is a entrance to the Refuse Store - Prox IN - Exit Button and Break Glass for Exit - Locking by Others

CCTV System

Installation of a 16 Channel CCTV Digital Video Recorder (DVR) with built in DVD drive and 19" Flat Screen Monitor and a lockable box to mount the equipment in. Plus 7 x Vandal resistant Dome Cameras and 2 x Lift Cameras located in the various locations: .

- Camera 1: Level 00 - Entrance Lobby.
- Camera 2: Level 00 - Lift Lobby.
- Camera 3 & 4: Level -01 - Bike Store.
- Camera 5: Level -01 - Lift Lobby.
- Camera 6: Level -02 - Refuse Store.
- Camera 7: Level -02 - Lift Lobby.
- Camera 8: Lift Car A
- Camera 9: Lift Car B

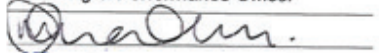


"EA-RS have been working for Octavia Housing since 2006 and we have found their work to be professional, good value and performed to a high standard."

Mamun Rahman

Octavia Housing

Planning & Performance Officer



EA-RS

sales@ea-rs.com www.ea-rs.com